

JET 120 Diamond

***Electric Kebab Knife
Elektro Dönermesser
Elektrikli Kebab Bıçağı
90 Watt***



***Doner Kebab Cutting Machine
Döner Schneidemaschine
Döner Kesme Makinası***

Table of contents:

Page 1: Cover Plate

Page 2: Table of Contents - Article

Page 3: List of articles - Kebab knives

Page 4: Exploded Drawing - Spare Parts

Page 5: Catalogue – Kebab Knives

Electric Kebab Knife JET 120 Diamond

The JET 120 Diamond Kebab Knife delivers outstanding quality, exceptional versatility, and remarkable durability. Its powerful 90-Watt Motor provides impressive cutting performance, allowing you to effortlessly process up to 150 kg of meat per day, making it ideal for continuous operation – even in 24/7 use.

A special feature of this professional knife is the red-illuminated rocker switch. This innovative switch design ensures optimized and safe operation, as it remains clearly visible even under demanding working conditions.

During the cutting process, the operator always maintains full control, benefiting from maximum ease of use and a significantly increased level of safety.

The ergonomic handle fits comfortably in the hand, allows precise guiding, and supports fatigue-free working – even during extended periods of use. This device is perfectly suited for kebab shops, restaurants, commercial kitchens, and all other professional catering businesses.



Precise Cutting Quality

The cutting thickness can be continuously adjusted from 0 - 10 mm. Thanks to this flexibility; you save valuable preparation time while serving your guests perfectly and evenly sliced meat at all times.

The cutting width varies between 10 - 40 mm, depending on the selected cutting thickness.

Technical Features

- Powerful 90-Watt Motor – robust, durable, and quiet during operation.
- Illuminated rocker switch (red) – on/off switch, water-repellent.
- Detachable cable set and separable transformer – simplifies cleaning and handling.
- 120 mm circular blade made of high-quality steel – ensures precise and clean cutting results.
- The device is splash-proof (electronics excepted).

Warranty & Service

The JET 120 Diamond Kebab Knife comes with a 12-month warranty. Our service team is available to assist you with any technical inquiries and provides fast support. Repairs, maintenance, and spare part delivery are handled directly by our customer service. The high capacity and robust construction ensure reliable performance in daily professional use.



Images may differ from the actual product. Technical specifications are subject to change.
We accept no liability for printing errors. Our general terms and conditions apply.

www.doenermesser.com

Item: JET 120 Diamond Kebab Knife

JET 120 Diamond (I)



Scope of delivery:

- 1 x JET 120 Diamond Electric Kebab Knife 90 Watt.
 - 1 x Transformer power supply 18 VDC 6.3 A 230V 50 Hz.
 - 2 x Round knife (smooth) 120 Ø mm.**
 - 1 x Grinding file, 1 x Slotted screwdriver.
 - 2 x Fuses 6.3 A. 1 x Knife screw, 1 x Pin.
 - 1 x Instructions for use.
- Delivery package weight: 5.5 kg LxWxH 400x250x160 mm

Model: JET 120 Diamond 90 Watt (I)

Item No.	Hand-held cutting device	Knife	Power W	Daily Output	Cut mm	Voltage	Net
DBS-DIA-001	1270 gr.	120 Ø mm	90 W	150 kg	0-10 mm	230V 50 Hz	809,59 €

JET 120 Diamond (II)



Scope of delivery:

- 1 x JET 120 Diamond Electric Kebab Knife 90 Watt.
 - 1 x Transformer power supply 18 VDC 6.3 A 230V 50 Hz.
 - 1 x Round knife (smooth) 120 Ø mm.**
 - 1 x Round knife (serrated) 120 Ø mm.**
 - 1 x Grinding file, 1 x Slotted screwdriver.
 - 2 x Fuses 6.3 A. 1 x Knife screw, 1 x Pin.
 - 1 x Instructions for use.
- Delivery package weight: 5.5 kg LxWxH 400x250x160 mm

Model: JET 120 Diamond 90 Watt (II)

Item No.	Hand-held cutting device	Knife	Power W	Daily Output	Cut mm	Voltage	Net
DBS-DIA-002	1270 gr.	120 Ø mm	90 W	150 kg	0-10 mm	230V 50 Hz	816,12 €

JET 120 Diamond (III)



Scope of delivery:

- 1 x JET 120 Diamond Electric Kebab Knife 90 Watt.
 - 1 x Transformer power supply 18 VDC 6.3 A 230V 50 Hz.
 - 2 x Round knives (serrated) 120 Ø mm.**
 - 1 x Grinding file, 1 x Slotted screwdriver.
 - 2 x Fuses 6.3 A. 1 x Knife screw, 1 x Pin.
 - 1 x Instructions for use.
- Delivery package weight: 5.5 kg LxWxH 400x250x160 mm

Model: JET 120 Diamond 90 Watt (III)

Item No.	Hand-held cutting device	Knife	Power W	Daily Output	Cut mm	Voltage	Net
DBS-DIA-003	1270 gr.	120 Ø mm	90 W	150 kg	0-10 mm	230V 50 Hz	848,04 €

Exploded Drawing - 120 Diamond 90 Watt

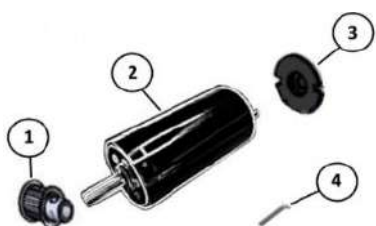
Images may differ from the actual product. Technical specifications are subject to change.
We accept no liability for printing errors. Our general terms and conditions apply.

www.doenermesser.com

Spare Parts



No.	Article No.	Designation	Net
1	DIA-122-001	Knife cap 120	31,96 €
2	DIA-058-002	Countersunk lens head with slot, head Ø 13.5 mm M5	5,25 €
3	DIA-060-003	Round knife Ø120 mm smooth	25,39 €
4	DIA-123-004	Housing front part 120 (complete)	114,64 €
5	DIA-063-005	Timing belt 240 teeth	8,80 €
6	DIA-064-006	Knurled screw M5	6,20 €
7	DIA-065-007	Handle Housing	50,92 €
8	DIA-066-008	Cover tray for handle	6,53 €
9	DIA-068-009	Motor complete, (18 volts 90 watts)	277,07 €
10	DIA-069-010	Rear switch housing, rocker switch illuminated	19,02 €
11	DIA-124-011	Scraper 120	5,38 €
12	DIA-017-012	Transformer power supply 18 VDC 6.3 A 230V 50 Hz.	119,01 €
13	DIA-108-013	Locking mechanism for housing	6,12 €
14	DIA-109-014	Connection cable. Set	39,61 €
15	DIA-112-015	Round knife Ø120 mm serrated	31,92 €
16	DIA-015-016	Slotted screwdriver	3,60 €
17	DIA-020-017	Grinding file	10,11 €
18	DIA-016-018	Glass tube fuse 5*20mm (6.3A)	0,17 €
19	DIA-018-019	Knife Holder Pen	1,62 €



No.	Article No.	Designation	Net
1	DIA-082-020	toothed disc	12,77 €
2	DIA-026-021	18 Volt 90-Watt motor	261,16 €
3	DIA-083-022	Motor protection cover	2,74 €
4	DIA-084-023	M2.5 screw	0,20 €



No.	Article No.	Designation	Net
1	DIA-125-024	Housing front part 120	45,70 €
2	DIA-087-025	Knife holder shaft	29,17 €
3	DIA-088-026	toothed disc	22,97 €
4	DIA-089-027	Cylindrical pin	0,26 €
5	DIA-090-028	Locking washer for shafts	0,21 €
6	DIA-091-029	Passing discs	0,23 €
7	DIA-092-030	shaft seal	6,24 €
8	DIA-093-031	Ball bearing inner diameter 7 mm	8,74 €



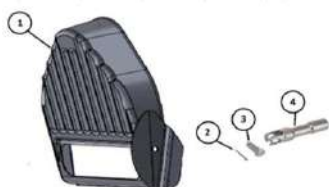
No.	Article No.	Designation	Net
1	DIA-094-032	Switch housing	11,75 €
2	DIA-095-033	Screw piece	0,15 €
3	DIA-036-034	Toggle switch on/Off	3,28 €
4	DIA-037-035	Protective cap (L x W x H) 25 x 19 x 8 mm	1,99 €
5	DIA-039-036	Rocker switch, on/off, red, illuminated	6,96 €



No.	Article No.	Designation	Net
1	DIA-096-037	Electrical copper contacts, housing	7,61 €
2	DIA-097-038	Housing, cable set.	9,29 €
3	DIA-098-039	Cover, cable set, housing.	3,92 €
4	DIA-099-040	Bend protection PG8	3,60 €
5	DIA-100-041	Cable 1.5 meters	8,13 €
6	DIA-101-042	3-pin male connector	7,06 €



No.	Article No.	Designation	Net
1	DIA-041-043	Cable with plug, length: 1 meter	12,71 €
2	DIA-042-044	Transformer, 18 VDC 6.3 A 230V 50 Hz.	91,25 €
3	DIA-043-045	Cable, female plug, 30 cm	10,25 €
4	DIA-016-046	Glass tube fuse 5*20 mm (6.3A)	0,17 €
5	DIA-045-047	Fuse holder from the table power supply	4,63 €



No.	Article No.	Designation	Net
1	DIA-126-048	Knife cap 120	21,77 €
2	DIA-104-049	Security	0,17 €
3	DIA-105-050	Joint pin.	3,20 €
4	DIA-106-051	Fork joint	6,82 €

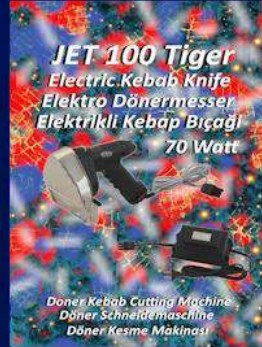
Images may differ from the actual product. Technical specifications are subject to change.
We accept no liability for printing errors. Our general terms and conditions apply.

Catalog Doner Knives

**Electric Kebab Knife, Elektro Dönermesser, Elektrikli Kebap Bıçağı.
Doner Kebab Cutting Machine, Döner Schneidemaschine, Döner Kesse Makinası.**

Ø 80 mm - Ø 90 mm - Ø 100 mm - Ø 120 mm

70 Watt



90 Watt



**The JET kebab knife is a very popular model that meets the needs and wishes of users.
The product is defined by the keywords "light, quiet and fast".
The simple operation, convenient cleaning and stepless adjustment of the circular knife make
JET unmistakable and at the same time successful. Stepless adjustment option 0-10 mm for meat thickness.
Suitable for all types of meat.**

**Dönermesser JET ist ein sehr weitverbreitetes Modell, welches den Anforderungen und Wünschen der Benutzer entspricht
Das Produkt wird mit den Schlagwörtern „leicht, leise und schnell“ definiert.
Die einfache Bedienung, komfortable Reinigung und stufenlose Verstellung des Kreismessers machen
JET unverwechselbar und zugleich erfolgreich. Stufenlose Verstell Möglichkeit 0-10 mm für Fleischstärke.
Geeignet für alle Fleischsorten.**

**Döner bıçağı JET, kullanıcıların ihtiyaç ve isteklerini karşılayan oldukça popüler bir modeldir.
Ürün "hafif, sessiz ve hızlı" anahtar kelimeleri ile tanımlanıyor.
Dairesel bıçağın basit kullanımı, rahat temizliği ve kademesiz ayarı,
JET'i farklı kılar ve aynı zamanda et kalınlığı için 0-10 mm kademesiz ayar seçeneğini başarılı kılar.
Her türlü ete uygundur.**