

**JET 120 Profi**  
**Electric Kebab Knife**  
**Elektro Dönermesser**  
**Elektrikli Kebab Bıçağı**  
**70 Watt**



**Doner Kebab Cutting Machine**  
**Döner Schneidemaschine**  
**Döner Kesme Makinası**

**Table of contents:**

Page 1: Cover Plate

Page 2: Table of Contents - Article

Page 3: List of articles - Kebab knives

Page 4: Exploded Drawing - Spare Parts

Page 5: Catalogue – Kebab Knives

## Electric Kebab Knife JET 120 Profi

The JET 120 Profi Kebab Knife is a powerful Profi tool that stands out for its outstanding quality, versatility, and exceptional durability.

The powerful 70-Watt Motor is designed to effortlessly process up to 100 kg of meat per day, making it ideal for intensive continuous use – even in 24/7 operation.

A special highlight of this device are the two integrated switches (toggle switch & push button). They enable significantly improved operation, increase safety, and provide even more convenient control during the cutting process. This double switch design offers clear advantages over conventional devices.

The ergonomic handle lies comfortably and securely in the hand and enables precise, fatigue-free.

Work – even with long periods of use. The device is ideally suited for Kebab snack bars, restaurants, and commercial kitchens and other Profi catering establishments.



### Precise cutting quality

The cutting thickness can be infinitely adjusted from 0 - 10 mm.

Thanks to this flexibility, you save time during preparation and can help your guests always serve evenly sliced meat.

The cutting width varies between 10 - 40 mm and depends on the selected cutting thickness.

### Technical

- Powerful 70-Watt Motor – robust, durable, and quiet in operation.
- Toggle switch - on/off switch, protective cap, splash water repellent.
- Pressure switch - on/off switch, protective cap, splash water repellent.
- Detachable cable set and separable transformer – makes cleaning and handling easier.
- 120 mm round blade made of high-quality steel – ensures precise, clean cutting quality.
- The device is splash-proof (electronics are excluded)

### Warranty & Service

The JET 120 Profi Kebab knife with a 12-month warranty.

The service team is available to answer any technical questions you may have and provides quick support. Repairs, maintenance, and spare parts are handled directly by the customer service.

The high capacity and robust construction ensure reliable use in daily operation.



Images may differ from the actual product. Technical specifications are subject to change.  
We accept no liability for printing errors. Our general terms and conditions apply.

[www.doenermesser.com](http://www.doenermesser.com)

# Article: JET 120 Profi Kebab Knife

## JET 120 Profi ( I )



### Scope of delivery:

1 x JET 120 Professional Electric Kebab Knife 70 Watt.  
 1 x Transformer power supply 18 VDC 6.3 A 230V 50 Hz.  
**2 x Round knife (smooth) 120 Ø mm.**  
 1 x Grinding File. 1 x Slotted Screwdriver.  
 2 x Fuse 6.3 A. 1 x Knife Screw. 1 x Pin.  
 1 x Instructions for use.  
 Delivery package weight: 5.5 kg LxWxH 400x250x160 mm

Model: JET 120 Profi 70 Watt ( I )							
Item No.	Hand-held cutting device	Knife	Power W	Daily Output	Cut mm	Voltage	Net
DBS-PRO-001	1270 gr.	120 Ø mm	70 W	100 kg	0-10 mm	230V 50 Hz	731,25 €

## JET 120 Profi ( II )



### Scope of delivery:

1 x JET 120 Professional Electric Kebab Knife 70 Watt.  
 1 x Transformer power supply 18 VDC 6.3 A 230V 50 Hz.  
**1 x Round knife (smooth) 120 Ø mm.**  
**1 x Round knife (serrated) 120 Ø mm.**  
 1 x Grinding File. 1 x Slotted Screwdriver.  
 2 x Fuse 6.3 A. 1 x Knife Screw 1 x Pin.  
 1 x Instructions for use.  
 Delivery package weight: 5.5 kg LxWxH 400x250x160 mm

Model: JET 120 Profi 70 Watt ( II )							
Item No.	Hand-held cutting device	Knife	Power W	Daily Output	Cut mm	Voltage	Net
DBS-PRO-002	1270 gr.	120 Ø mm	70 W	100 kg	0-10 mm	230V 50 Hz	737,78 €

## JET 120 Profi ( III )



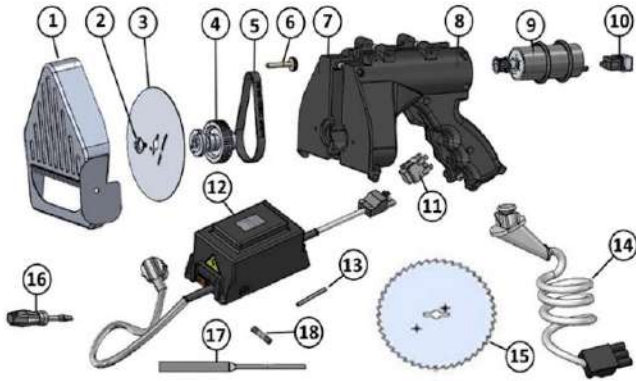
### Scope of delivery:

1 x JET 120 Professional Electric Kebab Knife 70 Watt.  
 1 x Transformer power supply 18 VDC 6.3 A 230V 50 Hz.  
**2 x Round knife (serrated) 120 Ø mm.**  
 1 x Grinding File. 1 x Slotted Screwdriver.  
 2 x Fuse 6.3 A. 1 x Knife Screw 1 x Pin.  
 1 x Instructions for use.  
 Delivery package weight: 5.5 kg LxWxH 400x250x160 mm

Model: JET 120 Profi 70 Watt ( III )							
Item No.	Hand-held cutting device	Knife	Power W	Daily Output	Cut mm	Voltage	Net
DBS-PRO-003	1270 gr.	120 Ø mm	70 W	100 kg	0-10 mm	230V 50 Hz	744,31 €

# Exploded Drawing - JET 120 Profi 70 Watt

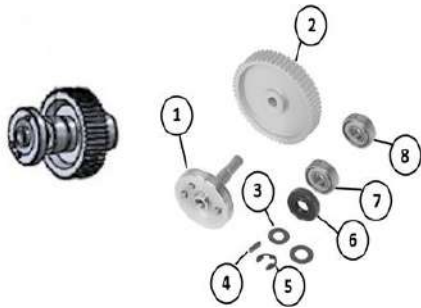
## Spare Parts



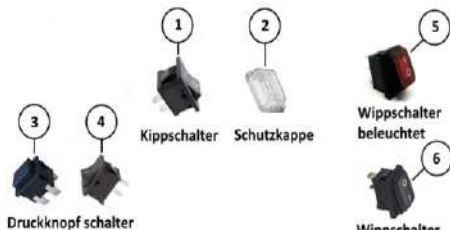
No.	Item No.	Designation	Net
1	PRO-062-001	Knife cap stainless Steel 120	31,96 €
2	PRO-058-002	Countersunk lens head with slot, head Ø 13.5 mm M5	5,25 €
3	PRO-060-003	Round knife Ø120 mm smooth	25,39 €
4	PRO-103-004	Gear box drive complete.	89,61 €
5	PRO-057-005	Timing Belt 225 T	12,17 €
6	PRO-070-006	Knurrrend screw M5	6,20 €
7	PRO-079-007	Right Cases	43,53 €
8	PRO-080-008	Left housing.	43,53 €
9	PRO-110-009	Motor complete, (18 Volt 70 Watt)	217,11 €
10	PRO-072-010	Toggle switch ON/OFF with protective cap	5,27 €
11	PRO-012-011	Pressure Switch, Black, Unlit On/Off	12,40 €
12	PRO-017-012	Transformer power supply 18 VDC 6.3 A 230V 50 Hz.	119,01 €
13	PRO-018-013	Knife Holder Pen	1,62 €
14	PRO-111-014	Trunk. Sentence	29,82 €
15	PRO-112-015	Round knife Ø120 mm serrated	31,92 €
16	PRO-015-016	Slotted Screwdriver	3,60 €
17	PRO-020-017	Grinding file	10,11 €
18	PRO-016-018	Glass tube fuse 5*20mm (6.3A)	0,17 €



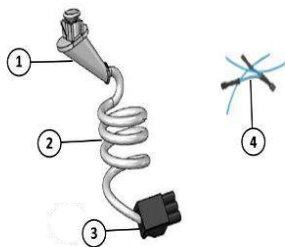
No.	Item No.	Designation	Net
1	PRO-044-019	Tooth lock washer	12,77 €
2	PRO-025-020	Motor 18 Volt 70 Watt	197,32 €
3	PRO-113-021	Engine Protektive Cover	2,74 €
4	PRO-084-022	Countersunk screw M2.5	0,20 €
5	PRO-081-023	Orring	1,84 €



No.	Item No.	Designation	Net
1	PRO-114-024	Knife Holder Shaft	36,24 €
2	PRO-115-025	Tooth lock washer	27,97 €
3	PRO-091-026	Passscheibe	0,23 €
4	PRO-089-027	Cylindrical pin	0,26 €
5	PRO-090-028	Lock washer for shaft	0,21 €
6	PRO-116-029	Oil seal	6,24 €
7	PRO-093-030	Ball bearing inner Ø 7 mm	8,74 €
8	PRO-117-031	Ball bearing inner Ø 6 mm	9,51 €



No.	Item No.	Designation	Net
1	PRO-036-032	Toggle switch on/off	3,28 €
2	PRO-037-033	Protective cap (L x W x H) 25 x 19 x 8 mm	1,99 €
3	PRO-012-034	Pressure Switch, Black, Unlit On/Off	12,40 €
4	PRO-038-035	Pressure Switch, Black, On-Off-On	3,40 €
5	PRO-039-036	Rocker switch, on-off, red, illuminated	6,96 €
6	PRO-040-037	Rocker switch, on-off, black, unlit	4,96 €



No.	Item No.	Designation	Net
1	PRO-118-038	Anti-kink grommet	8,25 €
2	PRO-100-039	Cable 1.5 meters	8,13 €
3	PRO-101-040	Connector 3 pin (male)	7,06 €
4	PRO-119-041	Connection cable with flat connector sleeve	6,38 €



No.	Item No.	Designation	Net
1	PRO-041-042	Cable with connector length: 1 meter	12,71 €
2	PRO-042-043	Transformer, 18 VDC 6.3 A 230V 50 Hz.	91,25 €
3	PRO-043-044	Cable plug female 30 cm	10,25 €
4	PRO-016-045	Glass tube fuse 5*20 mm (6.3A)	0,17 €
5	PRO-045-046	Fuse holder of the desktop power supply	4,63 €



No.	Item No.	Designation	Net
1	PRO-120-047	Knife cap	21,77 €
2	PRO-104-048	Fuse	0,17 €
3	PRO-105-049	Step	3,20 €
4	PRO-121-050	Fork joint	6,82 €

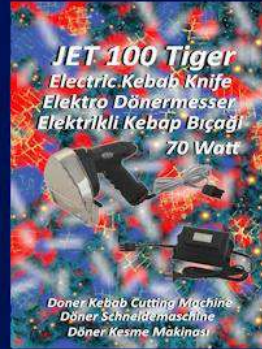
Images may differ from the actual product. Technical specifications are subject to change.  
We accept no liability for printing errors. Our general terms and conditions apply.

# Catalog Doner Knives

**Electric Kebab Knife, Elektro Dönermesser, Elektrikli Kebap Bıçağı.  
Doner Kebab Cutting Machine, Döner Schneidemaschine, Döner Kesme Makinası.**

**Ø 80 mm - Ø 90 mm - Ø 100 mm - Ø 120 mm**

**70 Watt**



**90 Watt**



**The JET kebab knife is a very popular model that meets the needs and wishes of users.  
The product is defined by the keywords "light, quiet and fast".  
The simple operation, convenient cleaning and stepless adjustment of the circular knife make  
JET unmistakable and at the same time successful. Stepless adjustment option 0-10 mm for meat thickness.  
Suitable for all types of meat.**

**Dönermesser JET ist ein sehr weitverbreitetes Modell, welches den Anforderungen und Wünschen der Benutzer entspricht.  
Das Produkt wird mit den Schlagwörtern „leicht, leise und schnell“ definiert.  
Die einfache Bedienung, komfortable Reinigung und stufenlose Verstellung des Kreismessers machen  
JET unverwechselbar und zugleich erfolgreich. Stufenlose Verstell Möglichkeit 0-10 mm für Fleischstärke.  
Geeignet für alle Fleischsorten.**

**Döner bıçağı JET, kullanıcıların ihtiyaç ve isteklerini karşılayan oldukça popüler bir modeldir.  
Ürün "hafif, sessiz ve hızlı" anahtar kelimeleri ile tanımlanıyor.  
Dairesel bıçağın basit kullanımı, rahat temizliği ve kademesiz ayarı,  
JET'i farklı kılar ve aynı zamanda et kalınlığı için 0-10 mm kademesiz ayar seçeneğini başarılı kılar.  
Her türlü ete uygundur.**